

Quick Installation Guide for RA410

Required components for installation:

- 24V DC power supply with at least 4 A
- speakers with 4 or 8 Ohms impedance

1. Mounting and connection

1.1 Mount the RA410 on a 35 mm DIN-rail.

1.2 Connect cables to audio speakers (check polarity) and power supply.

Warning: Double check power cable polarity before connecting! Wrong polarity may damage the device!

2. Operating modes

There are two different modes to operate the RA410: mono and stereo.

Operating mode: Mono

In this mode both channels work separately. The power amp switches on when

- the switching voltage at *Control In* is between 5 - 24V
- the voltage at the *Volume* input is $\geq 1V$.

Operation mode: Stereo

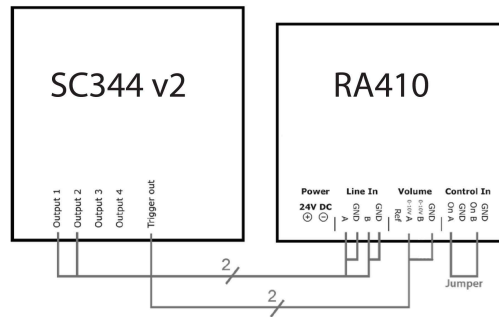
In this mode both channels are connected via a wire jumper between *Control In On A* and *On B*. In result, the volume is controlled via the *Volume Input A (0-10V)*.

3. Configuration

The RA410 offers many configuration possibilities. In the following, three common configurations are described.

Stereo configuration

In this configuration the RA410 is connected to another trivium device (in this example: SC344 v2). The volume of the RA410 is operated via the *Volume Output* of the SC344 v2.

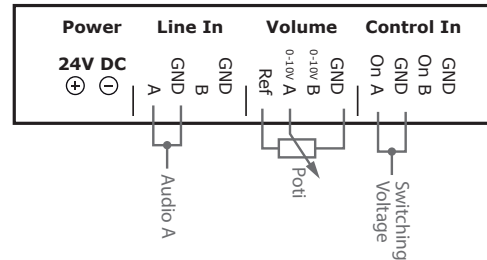


Mono configuration with poti

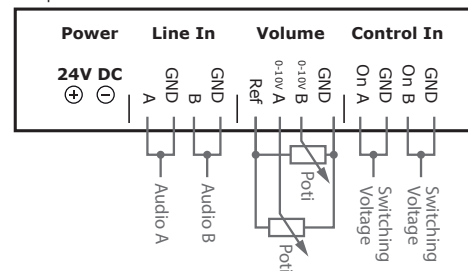
In this configuration the volume is operated via a potentiometer (poti).

Note: Input *Ref* = 10V DC LCO

Example: Mono Channel A



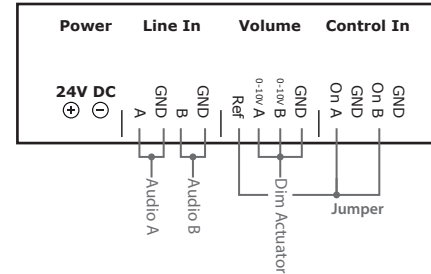
Example: Dual Mono Channel A/B



Mono configuration with Dim Actuator

In this configuration the volume is operated via a Dim Actuator (not included). The Input *Ref* is connected to both channels.

Example: Dual Mono Channel A/B



Example: Stereo with volume adjustment

